



Buckner
Homestead
HERITAGE FOUNDATION

Promoting the care and preservation of the Buckner homestead, orchard,
and community atmosphere in perpetuity

ANNUAL REPORT FOR 2014

A PRODUCTIVE YEAR

PROJECTS

While a number of 2014 projects are delayed, awaiting NPS and/or Washington State approval, many good things were accomplished at the Buckner Orchard in 2014.

Hazardous tree removal and viewscape restoration funded and carried forward from 2013 was completed by private contractor, eliminating maple limbs and fir trees posing a threat to fences, structures, and/or the historic apple trees.

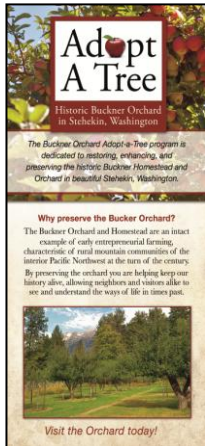
Working in collaboration with the *National Park Service*, a large fir tree threatening the Buckner Home and another precariously leaning over the horse watering trough were removed. And, a third large fir near the packing shed was removed as a part of viewscape restoration. This work was funded and completed by *NPS* and *WCC* crews, eliminating the need to expend the \$2,400 budgeted for this purpose.



Equipment Preservation (\$350 budgeted) was also completed at no monetary expense to the Foundation. In planning for this work with *NPS*, it was suggested we recycle heavy Alaskan yellow cedar picnic table tops for replacing blocks elevating the historic equipment displayed in the open at the Orchard. Coupled with the utilization of a *Washington Conservation Corp* crew, the work was completed in October at no direct cost to the Foundation.



Fruit Picking Bag Purchase (\$400 budgeted) Thanks to the generosity of *Superior Fruit Equipment* in Wenatchee, a dozen smaller, traditional *Wells and Wade* canvas picking bags were purchased at cost, (\$350), allowing us to not only purchase smaller, safer bags for public use, but to also acquire more bags than originally anticipated.



Adopt-A-Tree Brochure Update ((\$250 budgeted) With input from the Foundation Board, our long-over-due need to update the Buckner Orchard Adopt-A-Tree brochure was addressed in early summer. Designed by Foundation board member, Crystal Austin of *Crystalview Graphics*, attractive, contemporary, and up-to-date rack cards are now found in Chelan, Stehekin, Sedro-Woolley, and on the *Lady of the Lake*. In addition to information about supporting the Orchard, there is a slight change in focus to include inviting visitors to the Homestead and Orchard. (Cost: \$96.00)



Flag Pole, Dinner Bell, and Weather Station Restoration (No funds budgeted)

Working with the Buckner Family, the flag pole, a 1920's era feature, has been restored to the flag garden near the Buzzard Cabin. Materials and work were provided by the Buckner Family and were facilitated by the Foundation.

Restoration of the dinner bell to its original location near the Buzzard Cabin has been approved and it is anticipated it will be installed in the spring of 2015. Approval of the return of a replica weather station to the lawn of the Buckner Home still awaits finalization. You will recall that Harry Buckner was a volunteer weather observer at the homestead for over fifty years.

Interpretation Work at the Homestead and Orchard, begun in 2013 continued in 2014, with visible results on several fronts.

Relocation of self-guided brochure boxes noticeably increased the use of this resource.

Placing of a "retired" cider press at the Golden West Lodge with signage to raise awareness and to encourage visits to the Orchard.

Further planning by the collaborative BHHF/NPS/Stehekin Community group centers around possible additional interpretation of the barn-ice house-separator house area, the packing shed entrance area, and the historic equipment displayed near the Buzzard Cabin, as well as:

- Possible interpretative use of cellar and shop
- Possible use and placement of wayside exhibits
- Possible construction and location of a loop trail(s)
- Interpretation of all equipment, including forge and other objects in the shop
- Interpretation of the Buzzard Cabin
- Possible interpretative programs on-site and at the Golden West Lodge
- Guided tours and interpretative programs
- Historic district plaque

2014 Projects Awaiting Approval

Cuts in both Federal and State funding have reduced the number of cultural and historic positions over the past several years, resulting in a backlog of projects awaiting approval, including a number at the Buckner Orchard.

National Historic District Plaque (\$1,200 budgeted)

Replacement of Doors and Screens at the Buzzard Cabin and Cellar (\$1,500 budgeted)

Re-roof and repair of Milk Separator House (\$2,500 budgeted)

In addition, **restoration of the Studebaker wagon** has been delayed (\$8,000 budgeted) while ownership issues are resolved.

NOTE - Project funds not expended in 2014 will either be carried forward for those projects or reallocated for other projects by the Foundation Board.

THE "BIG" PROJECT OF THE YEAR!

In April, the *National Park Service* began renovation of the Buckner Home, a project that may last more than two years and is overseen by *NPS* restoration specialist, Dana Barton. This past year's work by Dana and her crew focused almost entirely on the building's foundation and supporting structures.

The original building, "Frank and Irene's cabin," has been added to, with remodeling and updating since initial construction around 1914. As expected, there has been deterioration over the past 100 years, but things were in better condition than hoped for.

The dedication to this project by Dana, Pat, Brandon, Dan, and others is amazing, for which we are most grateful. The goal of the restoration, funded by the *National Park Service*, is to update the house so it can, again, be a home to a *NPS* family, while retaining its cultural and historic features.



EVENTS, MEETINGS, AND ACTIVITIES

Square Dancing Returns to the Buckner Orchard!

August 16 saw the return of square dancing to the Buckner Orchard. Sponsored by the Foundation and held on the packing shed slab, 160 folks of all ages danced to the music and calling of the *Chelanigans*, a favorite of residents and visitors alike. Lights, music, fun!!



WRITE IT DOWN NOW, SQUARE DANCING AT THE ORCHARD SATURDAY, AUGUST 8, 2015

Harvest Fest 2014

Harvest Fest, now in its sixth year, was another unqualified success!



The Friday night music program at the school was a very popular event, with over 130 people attending. Standing room only! *Valley Music across the Generations* was the focus, featuring talented Valley residents and Stehekin Valley's own and ever-entertaining *Agnes on Fire* band!



Cider making and the community potluck (Saturday) brought together approximately 220 people to enjoy a large apple crop, a lot of cider making, great food and music, and the opportunity to visit with both new and old friends.

Agnes on Fire filled the Homestead with music and cheer!



The Stehekin Valley Poetry Night, (Sunday) now a part of Harvest Fest, was a relaxing conclusion to a great weekend. 17 of us enjoyed reading and listening to published, as well as original, selections.

Mark it on your calendar now. Harvest Fest 2015 will be Friday - Sunday, October 9-11



Work Parties

A number of work parties, three Foundation-sponsored, were held at the Orchard this past year.

February - Individual community members worked in the snow as a part of annual tree pruning

May - 10 volunteers "brought the water down," opening the intake and raking out the main channels

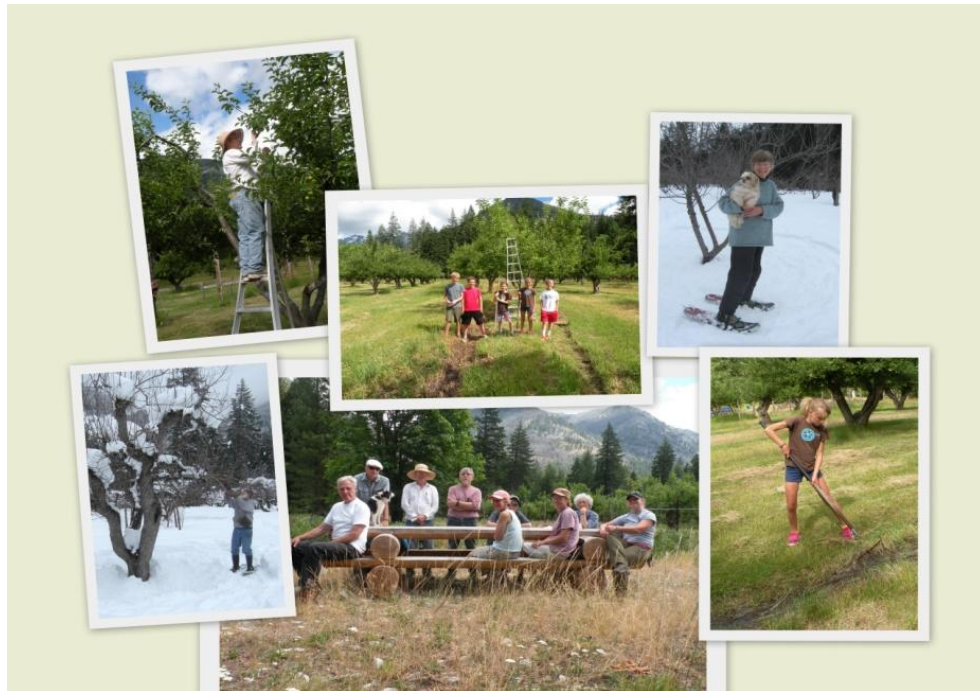
July - 14 individuals practiced old and new skills thinning apples and raking ditches at the Orchard!

August - 7 volunteers cleaned and readied the Orchard for the Square Dance. "Company's coming!"

October 3 - 22 folks came and went through the day; preparing the Orchard for winter, and getting ready for Harvest Fest.

Throughout the year, numerous individuals contributed time and energy weed eating, cleaning ditches, establishing and maintaining the garden, mowing, cleaning flowerbeds, pruning, raking, and stacking brush, planting seedlings, removing grafting tape, pulling fence posts, and setting up and taking down the electric fences; all to keep the Orchard alive and healthy, as well as maintaining the grounds around the buildings. Many thanks to all! YOU TOO can be a part of these activities in 2015!

Volunteers at the Orchard



Board Meetings

Formal board activities were conducted at the Annual Meeting in Manson, May 12, as well as on-line.

Board Elections

At the Annual Meeting, the following were re-elected to three-year terms on the Foundation Board:

Brun Garfoot (Chelan) Greater Lake Chelan Community At-large

JoAnne Reiter (Walla Walla) Community At-large

Jim Trappe (Corvallis, Oregon) Member At-Large

Continuing Board members are:

Cinda Gilbert (Manson) Buckner Family

Crystal Austin (Chelan) Member At-Large

Doug England (Manson) Apple Industry representative

Bob Nielsen (Stehekin) Stehekin representative

Dick Bingham (Stehekin) Stehekin Representative

Herb Sargo (Sedro-Woolley) Buckner Family

Vicki Gempko (Stehekin) NPS Liaison

Laurie Thompson (Stehekin) NPS Liaison

Foundation officers, President **Herb Sargo** (Sedro-Woolley), Secretary **JoAnne Reiter** (Walla Walla), and Secretary **Cinda Gilbert** (Manson); were re-elected to one-year terms.

National Park Service Activities



Laurie Thompson has cared for the Buckner Orchard for nearly 20 years as a *NPS* employee. Her dedication, love of the orchard and homestead, and sense of humor are incredible! Laurie is always willing to share the orchard with you, and would appreciate your help, even if for a short time. But, do contact her ahead of time, if possible.

Some of the *National Park Service* 2014 work, in addition to the care of the orchard by Laurie and others, included:



- Continued upgrade of existing elk and bear fence
- Work on the Buckner home, as previously detailed
- Removal of hazardous trees as noted earlier
- Propagation of 84 apple seedlings for propagation and bridge grafting on older trees
- Replacement of blocks under historic equipment
- On-going placement of mesh wire on trees to prevent elk damage
- Relocation of brochure boxes and benches, by a *Washington Conservation Corp* crew



Elk damage in 2014 was very limited, as opposed to the previous year. Early 2015, though, has resulted in severe damage to three Rome Beauty's by the 17 or so elk currently seen there.

SUPPORT

Adopt-A-Tree



A total of 37 trees were formally adopted in 2014 for 2015, raising \$925 for the care of the orchard. (Contributions must be reported for the year in which they are received. Hence the adoptions received in November and December of 2014 for 20145 are reported to the IRS as received in 2014.)

(The Claridge kids share their Adopt-A-Tree certificates from "Down Under," in Jamison, Australia.)

Memberships

35 memberships of various levels, totaling, \$4,325, helped fund projects in 2014 and into the future.

Donations

\$1,638.00 in donations were made to the Foundation in 2014, including two for specific activities at the homestead and orchard.

In-kind Contributions

Services and equipment use of approximately \$2,500.00, from individuals and businesses made the work of the Foundation more effective and much easier. In-kind contributions included:

Barge transportation, *Tom Courtney Tug and Barge*

Maintenance and continued development of our website, *Crystalview Graphics*

Equipment for Harvest Fest, *Stehekin Valley Ranch, Stehekin School, Stehekin Community, and Mike Torkelson*

Board meeting facilities, *Lake Chelan Reclamation District*

Clerical Materials, *Various individual*

Publicity and Reporting - *Golakechelan.com. Lake Chelan Mirror KOZI radio, Wilfred Woods, and Greg Kennedy*

Chamber of Commerce Membership, *Lake Chelan Chamber of Commerce-BHHF exchange*

Facilities use - *Stehekin School District*

Photography - *Leo Christoffer, Nancy Barnhart, Crystalview Graphics, and Herb Sargo*

And, the many individuals who made all our events and efforts successful, with special thanks to *JoAnne Reiter, Mark Scherer, and Mary Denmead for the music program planning.*

Thank you, all!

Grants

A grant for \$200 was received from Wilfred and Kathleen Woods and the *Community Foundation for NCW*, and will be used to support Harvest Fest in the years ahead. A most sincere "Thank You"!

OUTREACH

The Foundation continues to develop relationships with other organizations and to communicate our purpose and goals to the community. To that end, the following were continued during the 2014 program year.

Lake Chelan Chamber of Commerce – Memberships were exchange between the Foundation and the Chamber, allowing each to be a member of the other, enhancing the presences of each in the community and beyond.

The primary means of communication for the Foundation is e-mail, saving both time and money.

Three member updates were sent during 2014, along with announcements of coming events, and news releases to local media. Local Lake Chelan media has been very responsive in publishing our information, which is much appreciated.

ODDS AND ENDS

The Foundation continues to meet with NPS staff regarding **river bank preservation** along what was the Old Orchard. Funding sources are the issue and continue to be pursued.

The Foundation president met with various NPS staff during the year to ensure good communication, a strong working relationship, and meaningful support for the Homestead and Orchard. Communication is ongoing with the *National Weather Service* regarding the weather station replacement.



2014 FISCAL REPORT CONTINUES ON FOLLOWING PAGE

Fiscal Note - The delay in approval of major projects, coupled with a productive collaboration with the *National Park Service*, resulted in limiting expenditures in 2014. Currently-approved funding will be carried over to 2015 or reallocated to other projects at the Homestead and Orchard.

FINANCIAL - 2014 Final Report

CATEGORY	SUB-CATEGORY	2014 BUDGETED	2014 FINAL	100.00%
I. Balance Forward		\$18,638.92	\$18,638.92	100.00%
II. Revenues	A. Adopt A Tree	\$800	\$925	115.6%
	B. Donations - General Fund	\$750	\$1,638	218.4%
	C. Packing Shed			
	D. Memberships	\$4,000	\$4,325	108.1%
	E. Interest (Cashmere Valley Bank)	\$70	\$74.18	106%
	TOTAL INCOME	\$5,620	\$7,137.18	127.0%
TOTAL REVENUES		\$24,258.92	\$25,776.10	106.3%
III. Expenses	A. Equipment repair/maintenance	-\$200.00		0.0%
	B. Harvest Fest	-\$100.00	-\$255.39	255.4%
	C. Priority Projects	-\$16,600.00	-\$446.84	2.7%
	D. Incorporation and Affiliation	-\$80.00		0.0%
	E. Administrative Costs	-\$150.00	-\$98.95	65.9%
	F. CFNCW Affiliation			
	G. Incidentals	-\$200.00		0.0%
	H. Equipment Purchases	-\$500.00	-\$190.09	38.0%
	I. Summer Event	-\$1,000	-\$1,000.00	100%
	TOTAL EXPENSES	\$18,830.00	-\$1,991.27	1.1%
IV. ENDING BALANCE FWD		\$5,428.92	\$23,784.83	438.1%

The Buckner Homestead Heritage Foundation is a not-for-profit organization created specifically to support and preserve the Buckner Homestead and Orchard in Stehekin, Washington, and is registered as such with the State of Washington and the IRS (Tax ID #452913458)